

Milton Recreation Ground

Need For New Teenage Equipment

Client: Swale Borough Council
Address: Milton Recreation Ground, Vicarudge Road, Sittingbourne, ME10 2BL
Budget: £28,000
Age Range: Teenagers

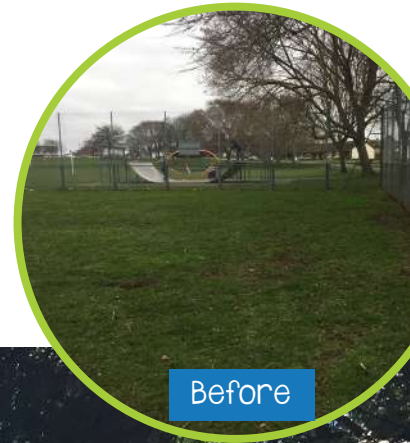
Project Story

Swale Borough Council wanted new and suitable equipment for teenagers as part of an ongoing programme of improvements to play areas that help children and young people across the borough get active and have more fun.

The newly installed equipment includes:

- Teqball to practice football skills - the first in the South East
- Five a side football area
- Aeroskate
- Skyrail challenge
- Rodeo board
- Aerial roundabout
- Street workout

What was an empty cage has now been transformed into a teenage area of heaven - with a range of dynamic play equipment and vitality fitness rig, this site is now providing teenagers with the access to a safe space to, socialise, have fun, and exercise.



Before

After



Thank you very much for your communication and assistance throughout the process. It makes my job so much easier to know that any issues are quickly and professionally dealt with. This is very much appreciated!

I've been very impressed with the Proludic set-up in the last two jobs and because of this will look to use where appropriate for future works.

- Daniel Gooch, Greenspace Team Leader, Swale District Council





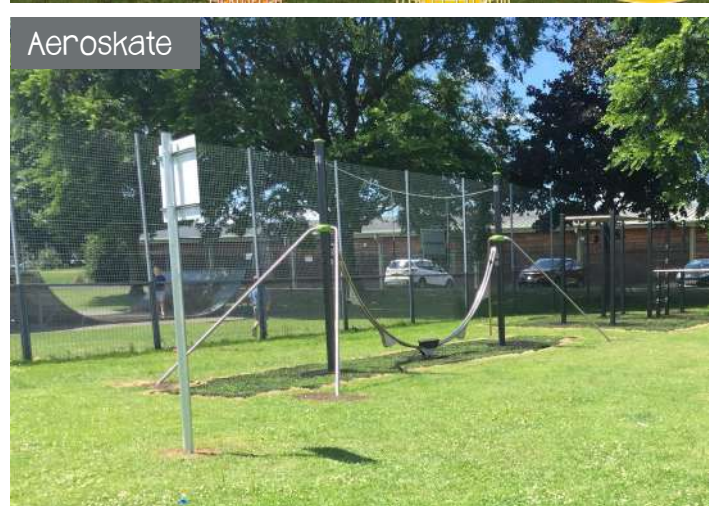
Street Workout



Design



Aeroskate



Age Appropriate Play

The dynamic structures, inspired by extreme sports (kitesurfing, paragliding, snowboarding ...) provide teens with a whole range of physical challenges. This equipment encourages teenagers to push themselves beyond their limits and to compete with their friends.

Ball games are excellent for developing physical, psychomotor and cognitive skills in teenagers.