



Oceans Day Nursery

New Playground for Children at Oceans Day

Client: Oceans Day Nursery

Address: Spring Street, Hucknall, Nottinghamshire, NG15 7BZ

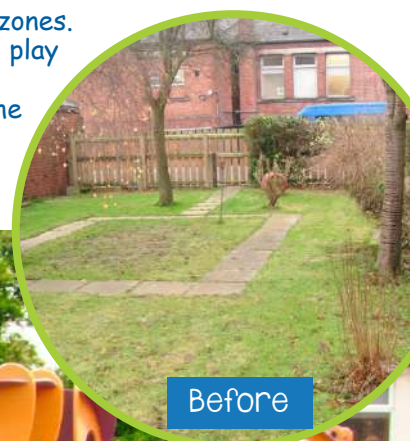
Budget: £34,000

Age Range: 2-5 years

Project Story

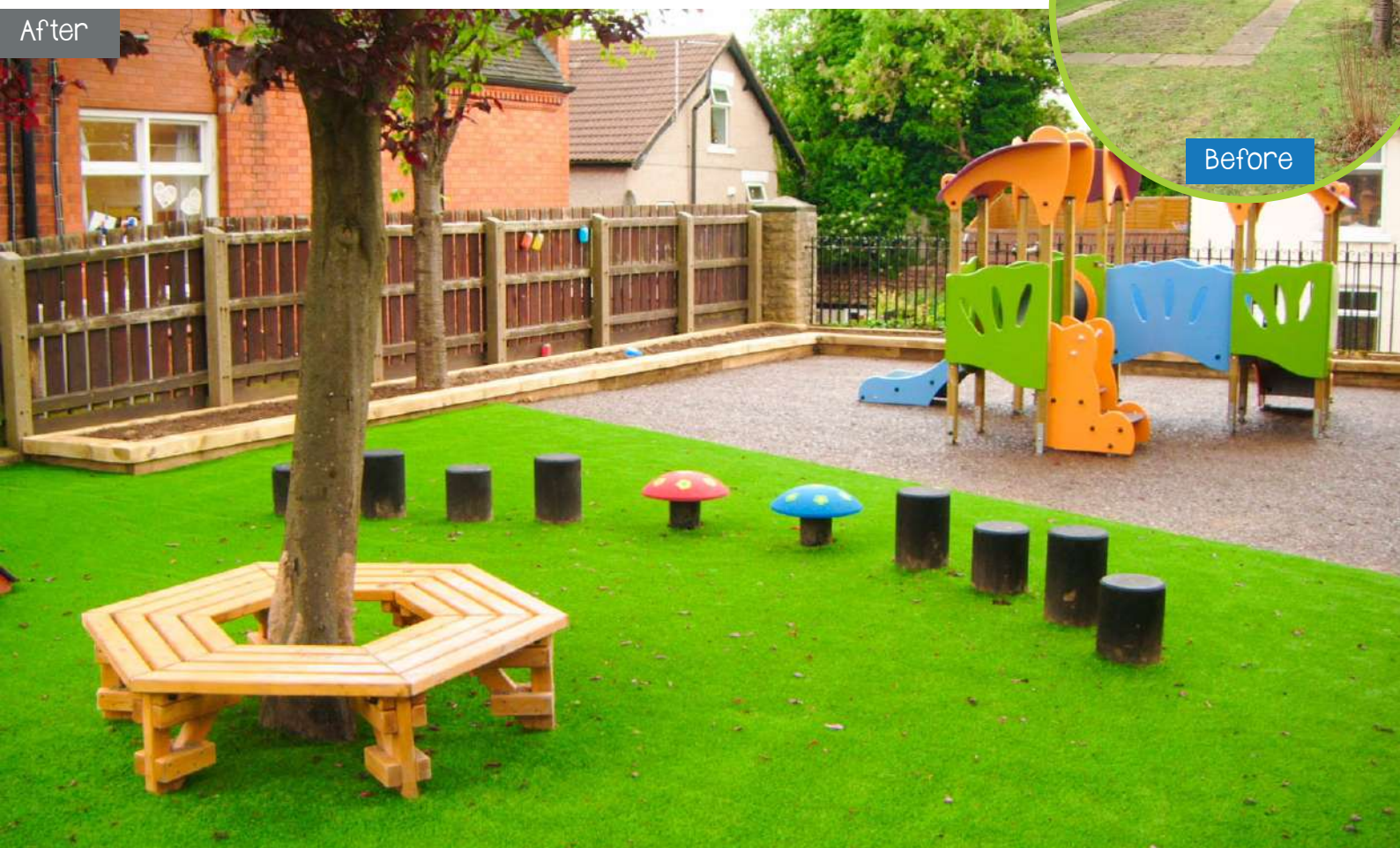
Catering for up to 93 children between the ages of 2-5 years, Oceans Day Nursery approached Proludic to assist them with the design of a new play space to replace an existing grassed area that was overgrown and not suitable for children's play. The client wanted a variety of play opportunities with a variety of different safer surfaces and the inclusion of natural play elements.

Providing children with as many play experiences as possible we have split the space into 2 zones. Within one zone is the Tiboo multiply unit which offers climbing, sliding, crawling and social play opportunities and within the second zone, we have included a balancing trail which improves physical literacy and a playhouse offering a quiet space for storytelling and shelter from the elements. Surrounding the equipment there are educational and sensory play panels along with raised planters.



Before

After



It was great to work on a project knowing the children and staff would have a brilliant new space to learn through play.



- Adam Dickerson, Proludic, Commercial Manager





Play Panel - Chimes



Play House



Tiboo MPU



Age Appropriate Play - Toddlers

Play should enable toddlers to improve their motor, psychomotor, sensory and social skills. Play equipment used should be more motion-based with different levels of difficulty to overcome and facilitate the discovery of new and more physical sensations. Childhood is also a time when children first set themselves against others. Physical activity then becomes a means of expression, interaction and communication.