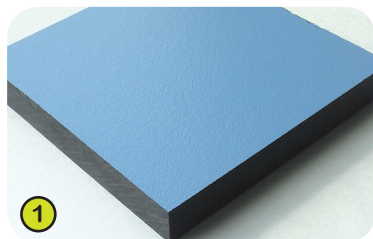


Themed equipment - J2690

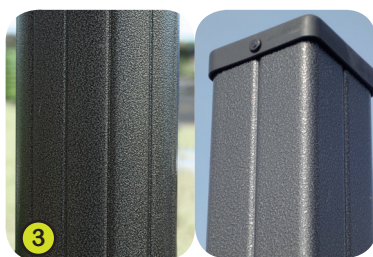
Technical specification



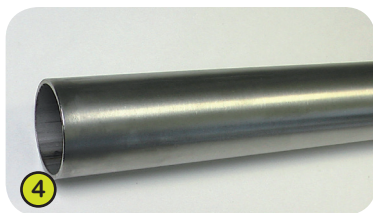
1- **The coloured panels** are made from a 13mm thick compact material (HPL). Robust in construction, it offers excellent resistance to weathering and vandalism.



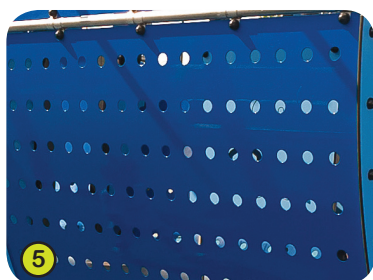
2- **The platforms** are made from a 12.5mm thick, textured, non-slip compact material (HPL).



3- **The 95mm square posts and the 125mm diameter posts** are made of painted steel, ensuring robustness and durability.



4- **The tubes** are made of stainless steel, diameter 40mm, thickness 2mm, ensuring robustness and durability.



5- **The cabin** is made of 3mm thick perforated aluminium coated with polyester epoxy lacquer.



6- **The slide slope** is made of 304 stainless steel 2mm thick, shaped, bent and rolled in one piece.



7- **The anti-slip steps** are made of corrugated aluminium sheets ensuring durability and lasting good looks.

8- **The swing seats** are made of shock absorbing moulded honeycomb rubber.

9- **The swing chains** are made of galvanised steel.

The seat fixing brackets are made of 10mm stainless steel wire.

PVC sliding rings are fitted to limit the wear of the metal parts over time. The rings are accessed by a vandal proof, stainless steel shackle.

10- **The pod** is made from a single piece of rotary moulded polyethylene. It is fixed to a stainless steel frame that is fitted with buffers. The pod is suspended from swing chains covered with thermal retracted polyethylene.

11- **The climbing holds** are made of polypropylene. They are non-toxic, non-flammable and shock and UV resistant.

12- **The stainless steel fixings** are protected by polyamide anti-vandalism caps.

