



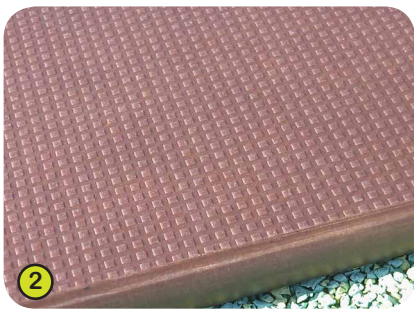
# Themed equipment

## Technical specification

### J2615



- 1- **The coloured panels** are made from a 13mm thick compact material (HPL). Robust in construction, it offers excellent resistance to weathering and vandalism.



- 2- **The platforms** are made from a 12.5mm thick, textured, non-slip compact material (HPL).



- 3- **The tubes** are made of stainless steel, diameter 40mm, guaranteeing lasting durability and reliability of the equipment.

**Injection moulded polyamide fixings** connect the posts with the platforms and the various play features. They are non-toxic, flame shock and U.V. resistant. The thickness of the polyamide makes the equipment both strong and vandal resistant.



- 4- **The rope elements** (diameter 16mm) are made of galvanised steel cable covered with black polypropylene.

**Injected polyamide spheres** are used to link the cables together and hold them in place.



- 5- **The fixings** are made of stainless steel and protected by anti-vandalism polyamide caps.